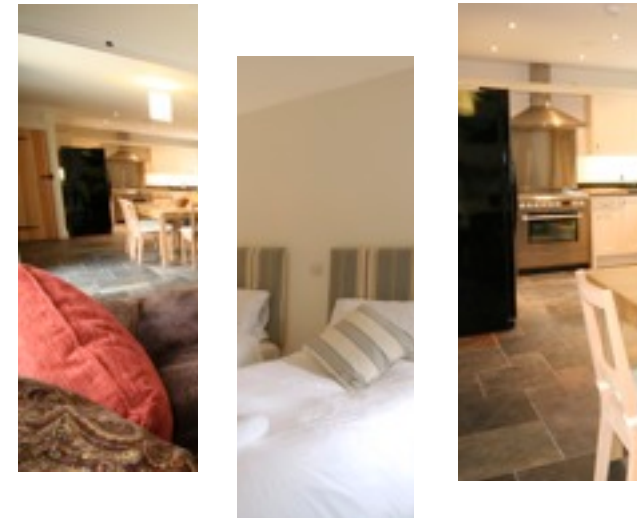


# Poachers Retreat

Seahouses, Northumberland  
5\* Visit Britain Graded



A spacious mid terraced cottage,  
airy & light with eco credentials

Close to sea

Sleeps 6 in 3 bedrooms

Dogs are welcome free of charge.

Non-smoking

Contact

Louisa or Sharyn at  
**Poachers Pocket**

14 Petworth Road, Haslemere  
Surrey GU27 2HR

**01428 652 625**

email: [louisa@poachers-pocket.com](mailto:louisa@poachers-pocket.com)

web: [www.poachersretreat.co.uk](http://www.poachersretreat.co.uk)

On line booking [www.staynorthumbria.co.uk](http://www.staynorthumbria.co.uk)



Located in a quiet courtyard, an easy walk to the coast, 3 miles south of  
Bamburgh in the North Sunderland area of Seahouses and  
just under a mile from the harbour

#### WHAT'S INCLUDED

- Range cooker
- American Fridge/Freezer
- Microwave
- Toaster
- Kettle
- Washer / drier
- Underfloor Central heating
- 2 Shower Rooms
- 1 Family Bathroom
- Welcome tea tray
- Wood Burner to lounge
- Quality Bedding, bed linen & towels provided.
- Crockery, Cutlery and cooking equipment for 8 people.
- Detailed tourist information
- Parking for 2 cars
- Stairgate
- Electricity included.
- TV, DVD
- Outside dining & barbecue
- Enclosed courtyard
- Wi-fi internet access
- Dogs go free.
- K9 welcome Pack
- Dog crate

Check availability and book online at [www.staynorthumbria.co.uk](http://www.staynorthumbria.co.uk)

We accept most major credit & debit cards



#### 2011/12 Price Guide

Note Short Breaks only available at certain times generally priced @ 80-85% of weekly rate. excludes Easter, Bank & school holiday periods. Dogs accepted free of charge. Deposit required on booking 20%, or full payment if within 50 days of arrival. Good Housekeeping bond of £250 required.

Dates	Price for 7 nights from
02 Jan 2012 - 01 Apr 2012	£525.00
02 Apr 2012 - 12 Apr 2012	£650.00
13 Apr 2012 - 10 May 2012	£650.00
11 May 2012 - 31 May 2012	£650.00
01 Jun 2012 - 07 Jun 2012	£750.00
08 Jun 2012 - 19 Jul 2012	£750.00
20 Jul 2012 - 06 Sep 2012	£899.00
07 Sep 2012 - 25 Oct 2012	£650.00
26 Oct 2012 - 01 Nov 2012	£650.00
02 Nov 2012 - 20 Dec 2012	£525.00
21 Dec 2012 - 01 Jan 2013	£999.00

## Modern facilities – traditional setting

The village of Seahouses lies on the North Northumberland Coast, historically having been famed for its fishing, kipper houses, lime production and grain exports. Today, although fishing is still continued, the main thrust is tourism, with many of the traditional stone-built smoke houses and yards having been converted into holiday cottages.

Just half a mile or so inland in North Sunderland we have built Hastings Farm Court, a development of four properties, 3 of which form a small courtyard close to the Church of St. Paul's and in a lovely quiet location.

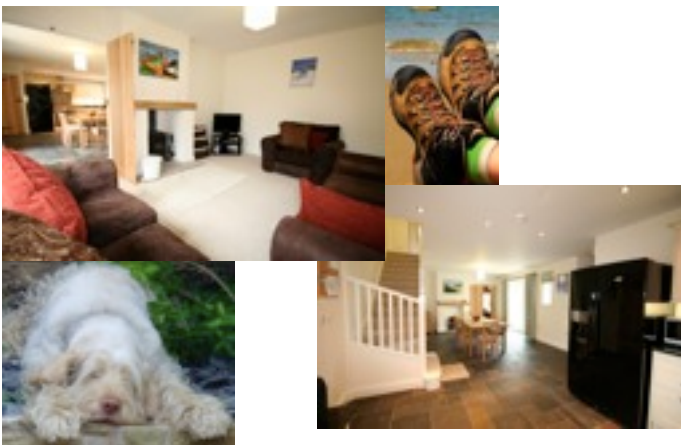
Poachers can be booked individually for up to 6 people or together with Hastings House a further 11 can be accommodated.

This brochure details Poacher's Retreat only, should you require details about multiple property bookings please call us on 01665 721380 or view our website

[www.poachersretreat.co.uk](http://www.poachersretreat.co.uk)

[www.staynorthumbria.co.uk](http://www.staynorthumbria.co.uk)

Note: the property is cleaned and linen laundered with eco-friendly products.



# Northumbria A Secret Kingdom



## Ideally situated –

The cottage is superbly situated for exploring the extensive Northumbrian beaches and dunes, the Farne Islands, Holy Island and the many castles within 20 miles. Inland you can visit the National Park and Cheviot Hills; to the south lies the market town of Alnwick, its castle and the Alnwick Garden; to the North, Bamburgh, Berwick and Edinburgh.



## Well equipped and furnished –

The cottage is one of three set within a graveled courtyard with private parking and also has its own private enclosed courtyard. Inside, the cottage is superbly finished, comfy sofas, well equipped kitchen dining area, and lounge, one ground floor bedroom and easy access shower room, and upstairs a further 2 bedrooms one en-suite and a large family bathroom.

Kitchen provides electric ceramic hob & fan assisted range oven, American style fridge/ freezer, microwave oven, washer drier and dishwasher and ample storage, crockery & cutlery. The family dining area is spacious with double doors out onto the courtyard.

Lounge has Colour TV, Freeview, DVD. CD/Radio. Comfy seating for up to 6. And a lovely log burning stove for cosy winter evenings.

Prices include bedding, bed linen, towels and electricity.

Heating is under floor throughout downstairs and in bath/shower rooms, Upstairs bedrooms have electric radiators. (not night-store). Water is solar heated.

## Bedrooms:

All bedrooms are fully furnished and beds can either be super king size doubles or twins, you choose which prior to arrival.

The cottage is finished and equipped to an extremely high standard and is graded 5 star rating under the Visit Britain rating scheme.

Well behaved children and pets welcome.

Pets are welcomed free of charge.

Private parking for 2 vehicles.

